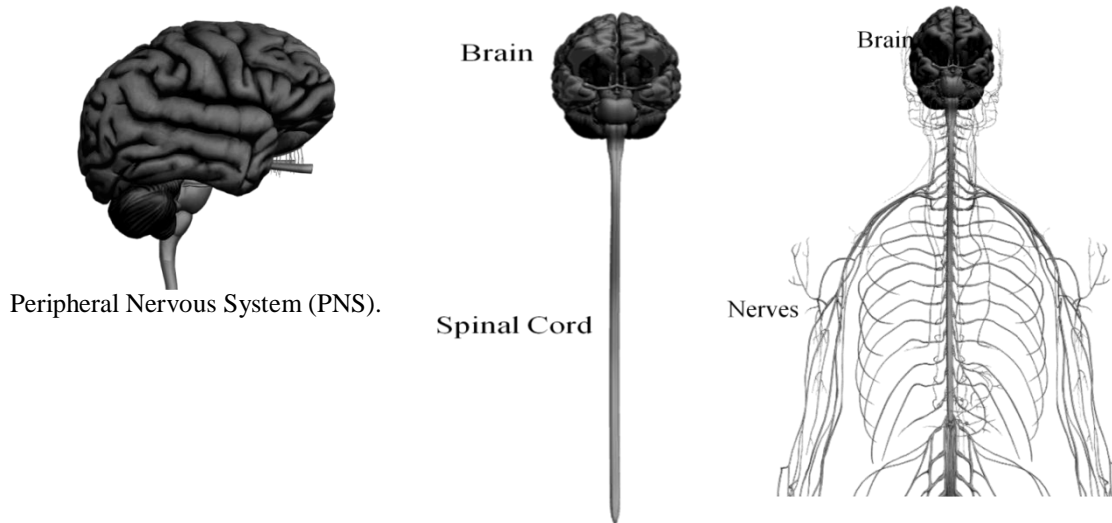


NEURAL CONTROL AND COORDINATION

Day - 2

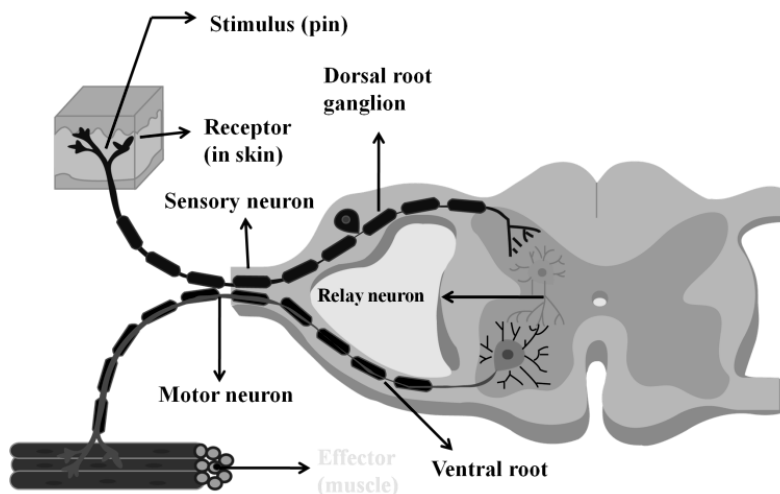
DIVISION OF HUMAN NEVOUS SYSTEM

Central Nervous System (CNS). Is dorsal, hollow and non-ganglionated. The CNS composed of Brain and the spinal cord.



Peripheral Nervous System (PNS).

- Long, thin, whitish threads called nerves. It has cranial and spinal nerves.
- Afferent (Sensory) nerve fibers.
- Efferent (motor) nerve fibers.

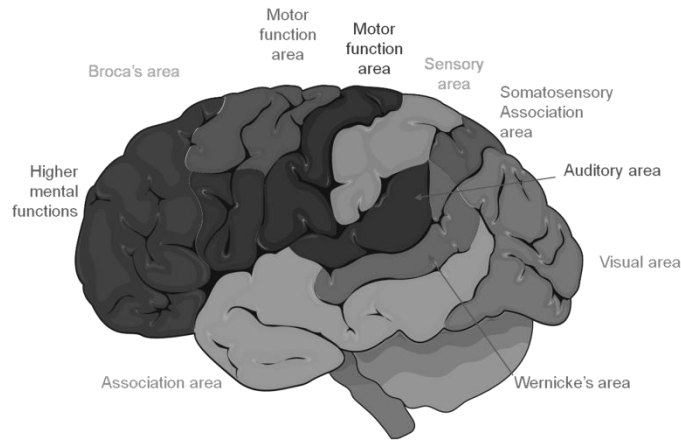


PNS is formed of two parts: It is formed of a complex of ganglia, nerves, nerve fibres and plexuses extending between CNS and visceral organs and smooth muscles and controls the involuntary functions CNS to skeletal (voluntary) muscles

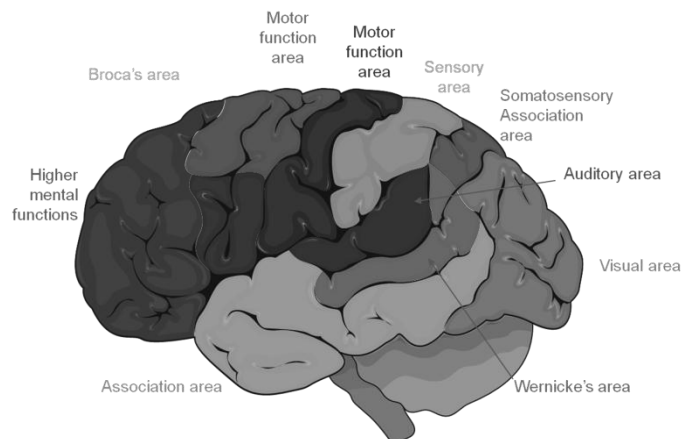
Functions of Nervous System

Control and coordination

NEURAL CONTROL AND CORRINATION



Sensory input
Integration
Motor out put
Memory
Homeostasis



Practice Question Online